

**Notice of Availability of Draft Environmental Assessment and Opportunity to Comment
for Proposed Improvements at the
Pangborn Memorial Airport in East Wenatchee, Washington**

The Chelan Douglas Regional Port Authority (CDRPA) and the Federal Aviation Administration (FAA) announce that a Draft Environmental Assessment (EA) has been prepared in accordance with the National Environmental Policy Act (NEPA) of 1969 guidelines to analyze the potential environmental impacts of proposed airfield improvements to the Pangborn Memorial Airport (Airport). The federal regulatory agency with jurisdiction over civil aviation is the FAA, which must review and approve all proposed facilities and development on airport property to ensure compatibility with safe airport operations. The draft EA has been prepared in accordance with FAA Order 1050.1F *Environmental Impacts: Policies and Procedures* and FAA Order 5050.4B *NEPA Implementing Instructions for Airport Actions*, and other FAA guidance.

The CDRPA proposes to rehabilitate and adaptively re-use the Airport's existing General Aviation (GA) Terminal building to address known building deficiencies and potentially hazardous conditions in order to meet the needs of existing and future users (Proposed Action). The GA Terminal building is a historic property eligible for listing on the National Register of Historic Places, and its rehabilitation required the Airport, FAA, and Washington Department of Archaeology and Historic Preservation to develop a Memorandum of Agreement to mitigate for adverse effects to historic properties. A Section 4(f) Evaluation has also been prepared in accordance with Section 4(f) of the U.S. DOT Act of 1966 (now codified at 49 U.S.C. § 303), which protects significant publicly owned parks, recreational areas, wildlife and waterfowl refuges, including public and private historic sites. This evaluation explains the purpose and need for the project, provides a discussion of alternatives, and determines that there are no feasible and prudent alternatives that would avoid the use of the Section 4(f) property. Through implementation of mitigation measures, the FAA determines the Proposed Action will have no significant impact on historic and Section 4(f) resources.

The location of the GA Terminal building, a photo of the existing building and a conceptual rendering of the rehabilitated building are shown on Figure 1-2, Figure 1-3, and Figure 3-1 of the Draft EA, respectively.

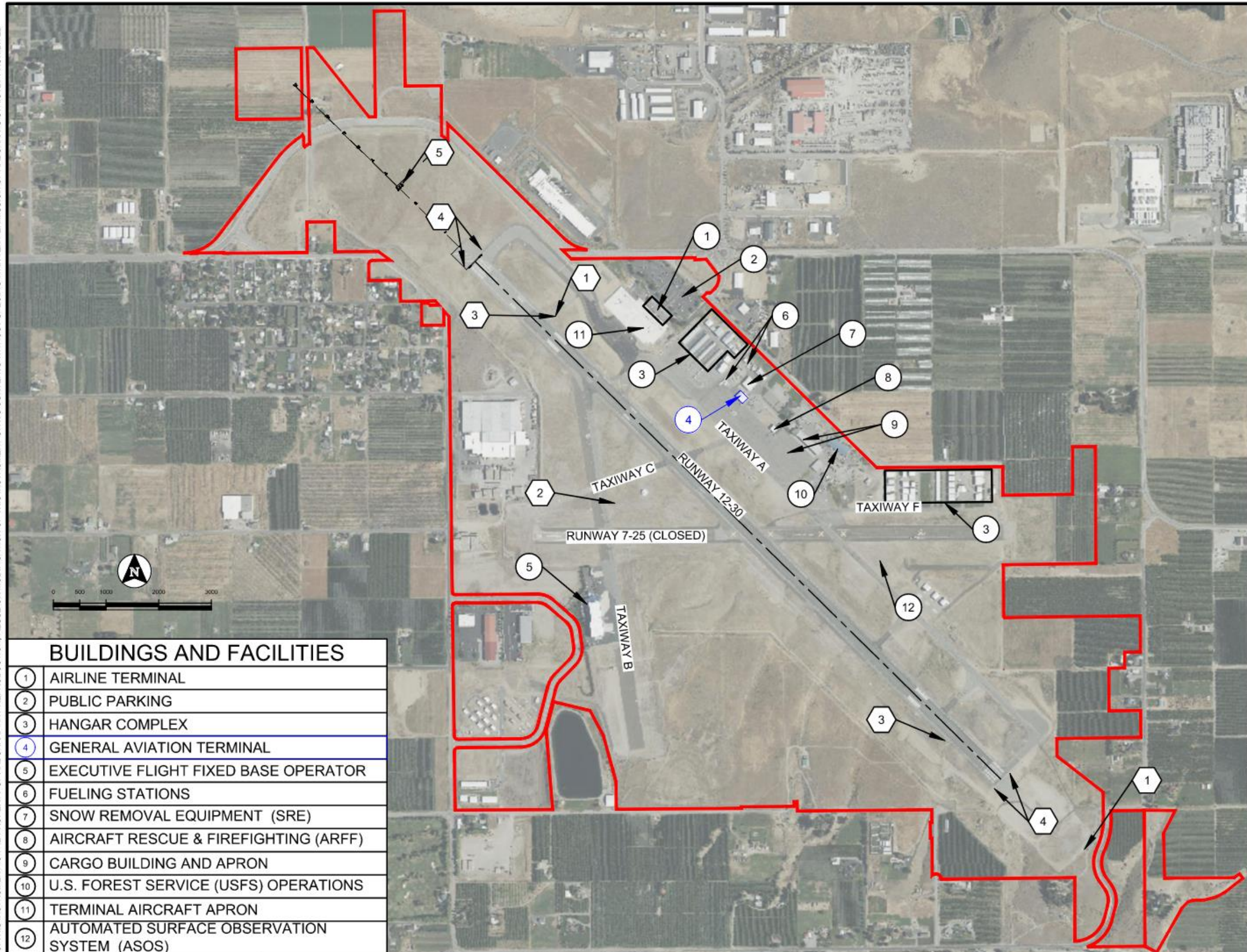
The CDRPA and the FAA welcome public comments on the Draft EA. The Draft EA will be available in hard copy for public review for a period of 30 days at the Wenatchee Public Library (310 Douglas St., Wenatchee, WA) during business hours Sunday through Saturday from January 15, 2024, through February 15, 2024. The document can also be reviewed digitally from the Airport's website, www.flywenatchee.com. For individuals who cannot review the document at the Library or cannot access the Airport's website, a hard copy of the document or electronic copy provided on a USB flash drive may be mailed by sending a request to Vince Barthels at vbarthels@ardurra.com or by phone at (509) 951-9564.

Public comment on this document is invited for a 30-day period extending from January 15, 2024 through February 15, 2024. Written comments regarding the draft EA will be accepted during the 30-day period as follows:

- Postmarked by February 15, 2024, if mailed to Vince Barthels at Ardurra, ATTN: Pangborn Memorial Airport EA Comments, 1717 S. Rustle Street, Suite 201, Spokane, WA 99224, or,
- Emailed by 11:59 PM PDT on February 15, 2024, to vbarthels@ardurra.com (a confirmation reply will be sent).

The responsible FAA official for information purposes is Valerie Thorsen, Assistant Manager, Seattle Airports District Office. She may be reached by email at Valerie.Thorsen@faa.gov.

N:\220095\Tasks\Task Order 22-12 - GA Terminal Plan Rvw\3_Acadddwg\Existing Airport Layout.dwg, 5/8/2023 8:44:07 AM, Sydney Anyan, DWG To PDF.pc3
 © 2023 ARDURRA GROUP, INC. THIS INSTRUMENT IS THE PROPERTY OF ARDURRA. ANY REPRODUCTION, REUSE OR MODIFICATION OF THIS INSTRUMENT WITHOUT SPECIFIC WRITTEN PERMISSION OF ARDURRA IS STRICTLY PROHIBITED



LOOKING NORTHWEST AT RUNWAY 12-30 AND TAXIWAY A
 [PHOTO DATE: 11-8-16]

BUILDINGS AND FACILITIES	
1	AIRLINE TERMINAL
2	PUBLIC PARKING
3	HANGAR COMPLEX
4	GENERAL AVIATION TERMINAL
5	EXECUTIVE FLIGHT FIXED BASE OPERATOR
6	FUELING STATIONS
7	SNOW REMOVAL EQUIPMENT (SRE)
8	AIRCRAFT RESCUE & FIREFIGHTING (ARFF)
9	CARGO BUILDING AND APRON
10	U.S. FOREST SERVICE (USFS) OPERATIONS
11	TERMINAL AIRCRAFT APRON
12	AUTOMATED SURFACE OBSERVATION SYSTEM (ASOS)

NAVAIDS	
1	INSTRUMENT LANDING SYSTEM (ILS)
2	VHF OMNI-DIRECTIONAL RANGE (VOR)
3	PRECISION APPROACH PATH INDICATOR (PAPI)
4	RUNWAY END IDENTIFIER LIGHTS (REIL)
5	MEDIUM-INTENSITY APPROACH LIGHTING SYSTEM (MALSR)

LEGEND	
	AIRPORT PROPERTY BOUNDARY (~700 ACRES)
	RUNWAY 12-30 CENTERLINE

DATE: 5/8/23 JOB: 220095



FIGURE 1-2: EXISTING AIRPORT LAYOUT

ARDURRA
 1717 S. RUSTLE STREET, SUITE 201
 SPOKANE, WA 99224
 509-319-2580 | WWW.ARDURRA.COM



Figure 1-3: Looking northeasterly at the front of the existing GA Terminal building.
Photo courtesy of Plateau Archaeological Investigations.



Figure 3-1: Conceptual architectural rendering of the rehabilitated GA Terminal building (Proposed Action), presented by ALSC Architects.